

Congratulations on your new Aurora Design BT-1 Bluetooth adapter. Combined with an FMR-1 converted radio, you can enjoy 21st century technology in your classic vehicle!

Setup: Before installing your radio back into your vehicle, you may wish to plug the supplied hands-free microphone or optional illuminated pushbutton into the appropriate jacks on the radio.

The microphone is only required if you want to support hands-free calls. If not, the microphone does not need to be attached. When not attached, the BT-1 will not broadcast that it supports hands-free operation and your phone will operate as normal. The microphone can be placed in a convenient location in the vehicle, typically along the front edge of the headliner near the rear view mirror or along the bottom edge of the dashboard. The attached cable is 9.8' (3M) long and can be routed as required, typically behind the A pillar cover for headliner mounting. Excess cable can be coiled and tied off.

The pushbutton assembly is not required when using an FMR-1 converted radio as the existing radio controls can be used to fully control the BT-1. The pushbutton assembly can still be used with an FMR-1 converted radio if desired, and must be used with all other installations. The pushbutton requires a 1/2" (12.7mm) hole and should be mounted somewhere convenient such as the bottom edge of the dashboard. The pushbutton is illuminated with a red status LED that should be made visible for easiest operation. The attached cable is 3.3' (1M) long and can be routed as required. Excess cable can be coiled and tied off.

Operation: When first powering the radio on, the optional pushbutton will blink once to show the BT-1 is now operational. After powering up, the BT-1 will always try to reconnect to one of the last eight connected devices. Once a device is connected, the optional pushbutton LED will illuminate solid or a confirmation tone will be heard. If a device that has been paired to the BT-1 does not automatically reconnect, go to the Bluetooth menu on the device and manually reconnect.

When audio is streaming or a phone call comes in, the BT-1 will signal to the FMR-1 to automatically switch to the Bluetooth mode. The FMR-1 status LED will change color to indicate the Bluetooth is active. (see FMR-1 manual for more information on status LED) When the Bluetooth is finished, the FMR-1 will go back to the prior mode. The user never needs to make any selections or adjustments to the radio!

Pairing: To pair a device to the BT-1 it must first be put into the pairing mode. On an FMR-1 radio, twist the volume control back and forth twice towards the direction of higher volume, (Hint: this is the same action that is performed with the tone control on the FMR-1 to adjust the fader controls) or optionally press and hold the pushbutton. The optional pushbutton LED will start fast blinking or a confirmation tone will be heard to indicate pairing mode. The BT-1 will stay in pairing mode for 90 seconds or until a device is paired.

While in pairing, go to the Bluetooth menu in your device and look for *AuroraDesign BT-x.x* and select it. (x.x represents the version. Refer to the owners manual for your device on pairing and selecting the BT-1 for audio and hands-free usage) Once paired and connected, the pushbutton LED will illuminate solid.

Up to 8 devices can be paired to the BT-1. If the pairing table is full and another device is paired, the oldest paired device will be removed from the table. Only one device can control the BT-1 at any given time.

Voice Command: The *Voice Command* feature allows the user to control their compatible Bluetooth device through voice commands. It is designed to work with Apple Siri®, Google Voice® and Microsoft Cortana® interfaces. To initiate a *Voice Command*, twist the volume control back and forth twice towards the direction of higher volume or push and hold the optional pushbutton. (this is the same motion that was used to open up pairing) Wait for the confirmation tone from the Bluetooth device and then speak the command. For example you can say things like “call home” or “play Bruce Springsteen”. Check with the manual for your Bluetooth device for further information on its support for voice commands.

Audio Streaming: To start playing music, twist the volume control on the radio back and forth twice towards the direction of lower volume or push and hold the optional pushbutton for about 1 second. To toggle between pause and play, repeat the above procedure. When the audio is paused, the optional pushbutton LED will blink slowly.

To skip to the next song, twist the tuning control on the radio towards the high frequency end of the dial or quickly press the optional pushbutton once. To skip to the previous song, twist the tuning control towards the low frequency end of the dial or quickly press the optional pushbutton twice. (Hint: when twisting the tuning control on the radio, twist it in the desired direction and then back to the starting point. This way the tuner always remains in the same position)

Hands-free Phone: When a phone call comes in, the radio will mute and ring through. To accept the call, twist the tuning control on the radio towards the high frequency end of the dial or quickly press the optional pushbutton once. To reject or end a call, twist the tuning control towards the low frequency end of the dial or quickly press the optional pushbutton twice.

To place a call on hold (muted), twist the volume control back and forth twice towards the direction of lower volume or push and hold the optional push button. To toggle between mute and un-muted, repeat the procedure above. When the audio is muted, the optional pushbutton LED will blink slowly.

The Bluetooth device can also be controlled using its own menus. (follow manufactures instructions on controlling your device)

Due to differences in Bluetooth devices and their operating systems, the BT-1 may not operate with all Bluetooth devices.

Troubleshooting:

Poor Range: Make sure nothing is obstructing the dial face of the radio, or the openings along the bottom side of the radio chassis. Try moving your Bluetooth device to a different location.

No Sound: Make sure the BT-1 is paired and connected to your Bluetooth device. Also make sure the BT-1 is selected as the audio device for streaming audio and hands-free operation on your device following the manufacturers instructions.

US Certification:

This equipment has been tested and found to comply with the limits for a Class B digital device, pursuant to part 15 of the FCC Rules. These limits are designed to provide reasonable protection against harmful interference in a residential installation. This equipment generates, uses and can radiate radio frequency energy, and if not installed and used in accordance with the instructions, may cause harmful interference to radio communications. However, there is no guarantee that interference will not occur in a particular installation. If this equipment does cause harmful interference to radio or television reception, which can be determined by turning the equipment off and on, the user is encouraged to try to correct the interference by one or more of the following measures:

- Reorient or relocate the receiving antenna.
- Increase the separation between the equipment and receiver.
- Consult the dealer or an experienced radio/TV technician for help.

Canadian Certification:

This device complies with Industry Canada license-exempt RS standard(s). Operation is subject to the following two conditions: (1) this device may not cause interference, and (2) this device must accept any interference, including interference that may cause undesired operation of the device.

Under Industry Canada regulations, this radio transmitter may only operate using an antenna of a type and maximum (or lesser) gain approved for the transmitter by Industry Canada. To reduce potential radio interference to other users, the antenna type and its gain should be so chosen that the equivalent isotropically radiated power (e.i.r.p.) is not more than that necessary for successful communication.

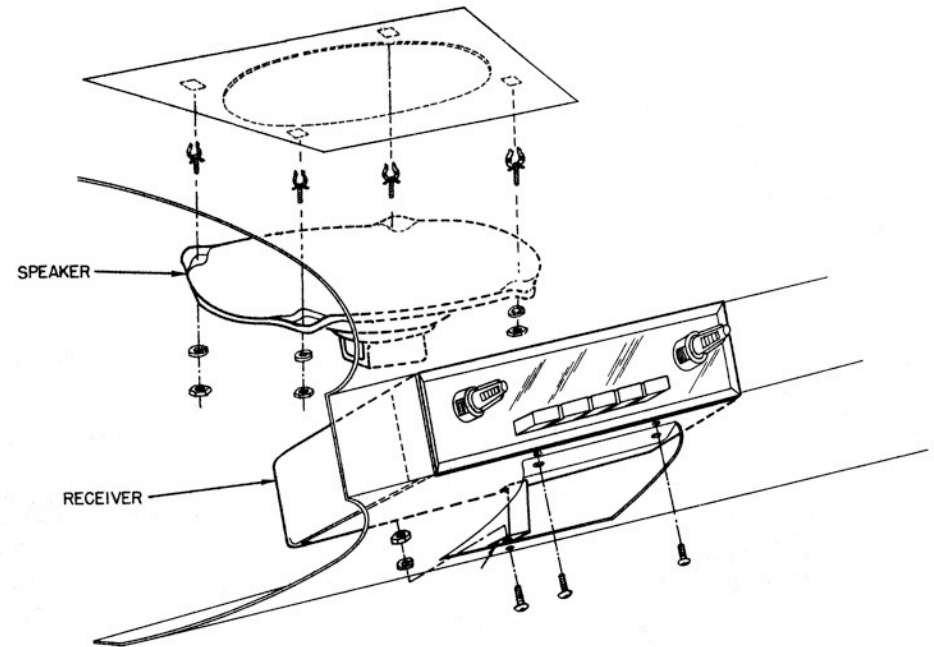
European Certification:

The Bluetooth module used in this device complies with the essential requirements of the R&TTE 1999/EC, the EMC Directive 2004/108/EC and the low-voltage Directive 2006/95/EC.

Aurora Design LLC. does not assume any responsibility for personal injury or property damage incurred due to hazardous driving as a result of interaction with the BT-1 or other Bluetooth devices. Never text and drive!

Aurora Design LLC. ©2013-15 Rev 1.6 12/15

Aurora Design BT-1 Bluetooth Adapter



User Operation Manual

